



**TEMPORARY CLOSURE OF PUBLIC FOOTPATHS CHP 8 AND ZCH 15  
(PRESTBURY PARISH) CHELTENHAM BOROUGH**

NOTICE is hereby given that the Secretary of State for Transport has extended the Order to close temporarily under Sections 14, 15 and 16 of the Road Traffic Regulation Act, 1984 (as amended) part of the public footpaths described in the Schedule below: -

**THE SCHEDULE**

Public Footpaths CHP/8 and ZCH/15 are to be temporarily closed from the junction with New Barn Lane, at Ordnance Survey Grid Reference (OSGR) SO 9596 / 2398 (Point A on the site plan) and running in a generally southerly direction for a distance of approximately 240 metres to the junction with Welland Lodge Road at OSGR SO 9594 / 2374 (Point B) and shown by a solid black line on the site plan.

The closure is necessary to facilitate construction works nearby.

The footpaths fall within the Prestbury Parish in the Cheltenham Borough, Gloucestershire.

The Temporary Closure Order came into force on the 31<sup>st</sup> May 2018 and is due to expire on 30<sup>th</sup> November 2018. However, works have still not completed, and an extension has been granted by the Secretary of State for Transport, and will last until 30<sup>th</sup> November 2019 or until the works are complete whichever is earliest.

The alternative route – As signed on Site.

For further information, please contact Gloucestershire Highways on **08000 514 514** or visit **[www.gloucestershire.gov.uk](http://www.gloucestershire.gov.uk)**.

Emergency and pedestrian access will be maintained throughout the closure.

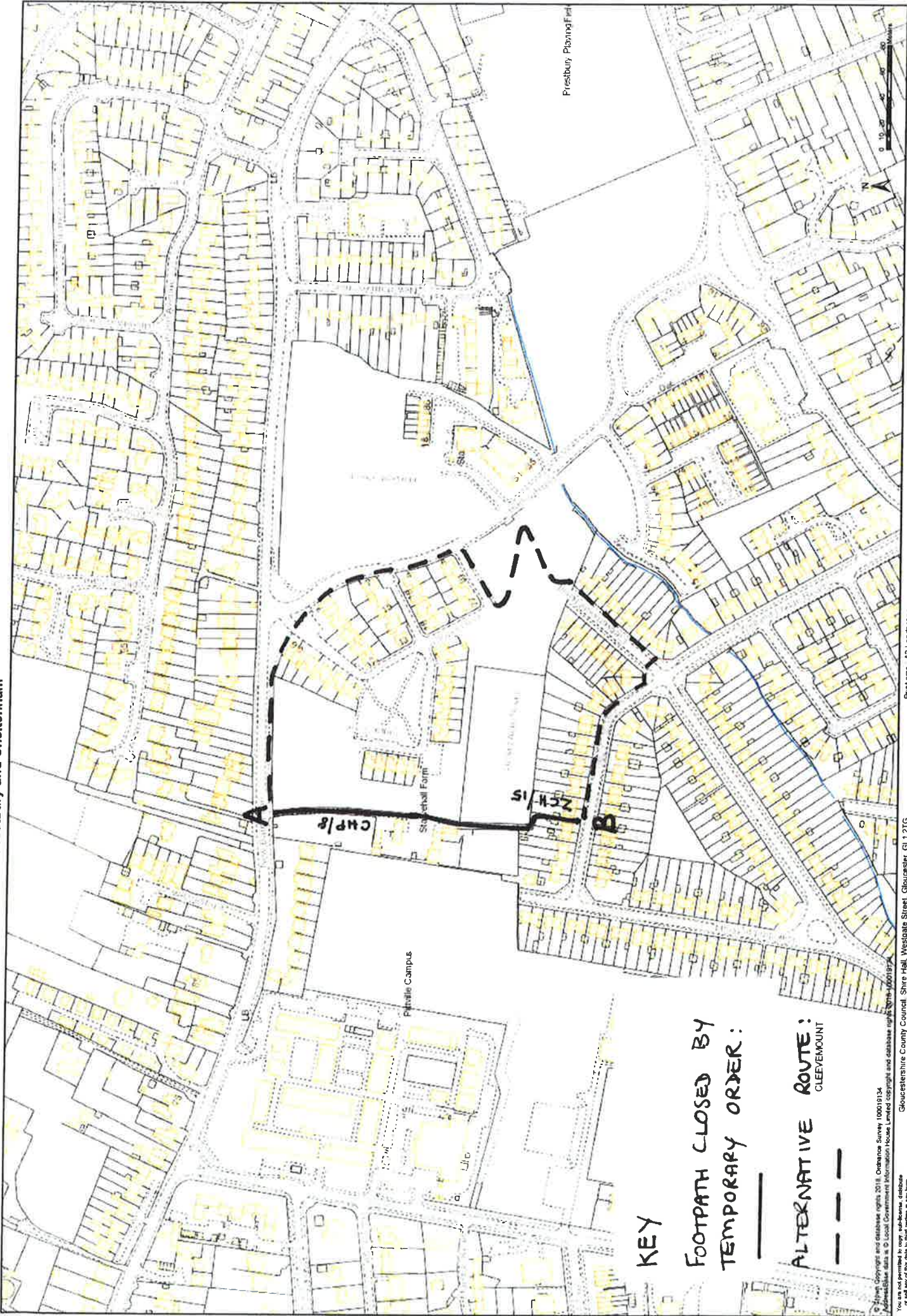
DATED: 6<sup>th</sup> December 2018

For Head of Legal Services

JVB/65650

Legal Services, Shire Hall, Westgate Street, Gloucester, GL1 2TG

Temporary Closure of Footpaths CHP/8 and ZCH/15 in the Parishes of Prestbury and Cheltenham



KEY

FOOTPATH CLOSED BY  
TEMPORARY ORDER:

ALTERNATIVE ROUTE:  
CLEVEDON MOUNT